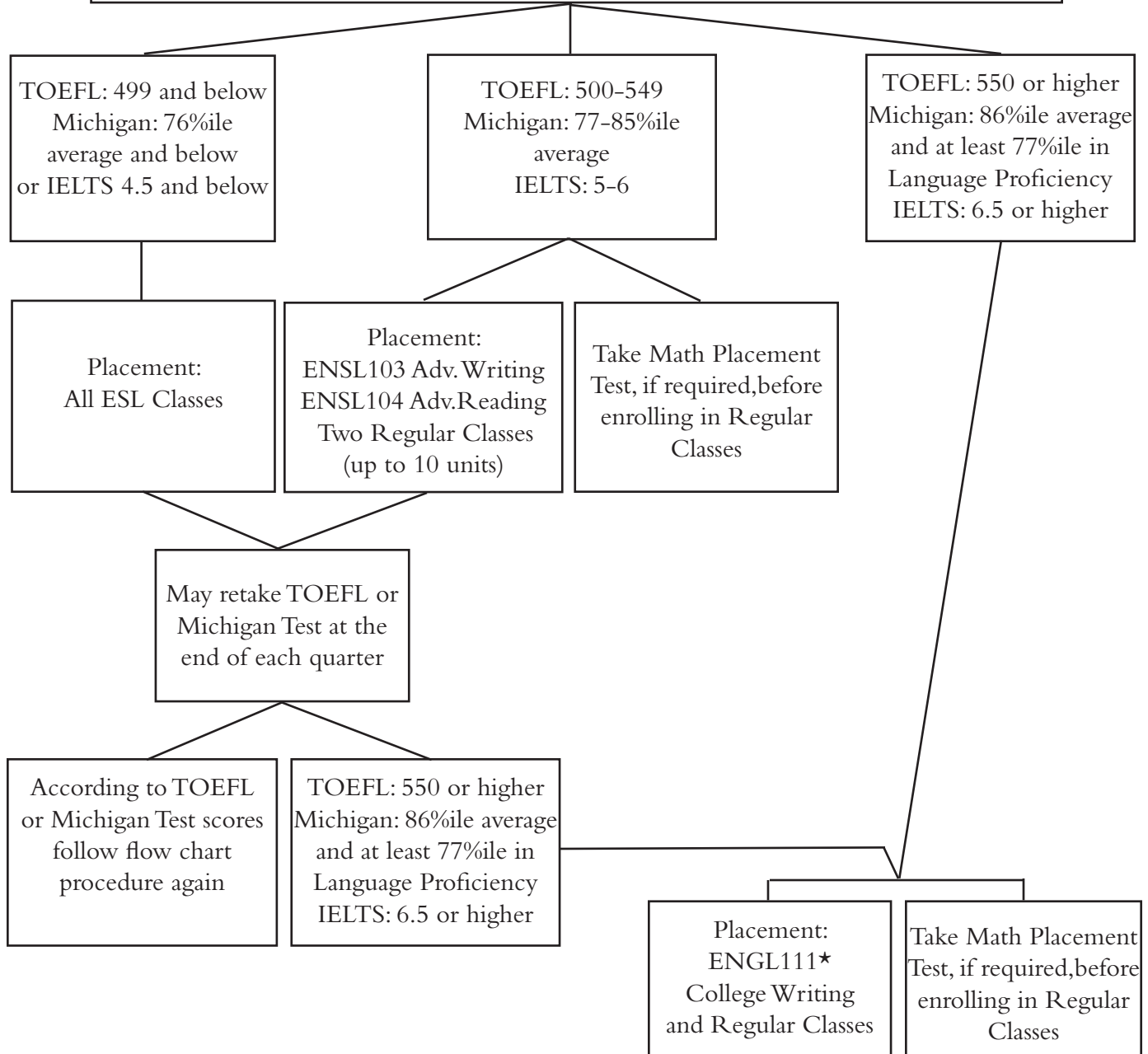


All incoming students who were educated abroad, except in Australia, Canada, New Zeland, and the U.K., must take either the TOEFL or the Michigan Test of English Language Proficiency. As an alternative, students may present an IELTS, TOEFL, or Michigan Test score if the test was taken within the last five years



\*The English Department faculty reserve the right to require students to transfer to a Pre-Foundational or an ESL class as indicated by performance on the initial in-class writing test administered at the beginning of each quarter.